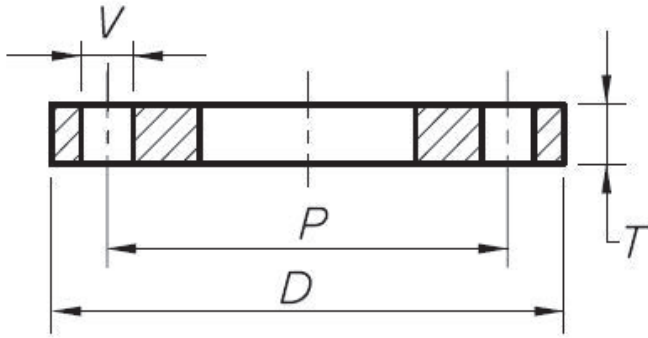


# TABLE "H" SLIP ON PLATE FLANGES

VALVES  
 GALVANISED  
 MALLEABLE  
 STAINLESS  
 STEEL FITTINGS  
 BLACK & GAL  
 STEEL FITTINGS  
 HIGH PRESSURE  
 FITTINGS  
 CAMLOCKS  
 ROLL GROOVE  
 BUTTWELD  
**FLANGES**



Nominal Pipe Size (mm)	GVF Code	OD of Flange D (mm)	Bolt Circle Diameter P (mm)	Bolt Hole Diameter V (mm)	Number of Bolt Holes	Thickness of Flange T (mm)	Weight Approx. (Kg)
15	ASSOH015	115	83	18	4	13	0.9
20	ASSOH020	115	83	18	4	13	0.92
25	ASSOH025	120	87	18	4	14	1.06
32	ASSOH032	135	98	18	4	17	1.61
40	ASSOH040	140	105	18	4	17	1.7
50	ASSOH050	165	127	18	4	19	2.64
65	ASSOH065	185	146	18	8	19	3.06
80	ASSOH080	205	165	18	8	22	4.31
100	ASSOH100	230	191	18	8	25	5.76
125	ASSOH125	280	235	22	8	29	9.83
150*	ASSOH150	305	260	22	12	29	10.74
200	ASSOH200	370	324	22	12	32	16.29
250	ASSOH250	430	381	26	12	35	21.89
300	ASSOH300	490	438	26	16	41	31.17
350	ASSOH350	550	495	30	16	48	47.8
400	ASSOH400	610	552	30	20	54	62.2
450	ASSOH450	675	610	33	20	60	105.4
500	ASSOH500	735	673	33	24	67	-
600	ASSOH600	850	781	36	24	76	-

### MATERIALS

Q235B / Rst37.2  
Plate Steel

### SPECIFICATIONS

Pressure Rating  
3500 kPa  
\*Available to suit 165 or 168 pipe

### STANDARD

Dimensional  
AS2129